



IFI solution I

-----Wireless Local Area Network

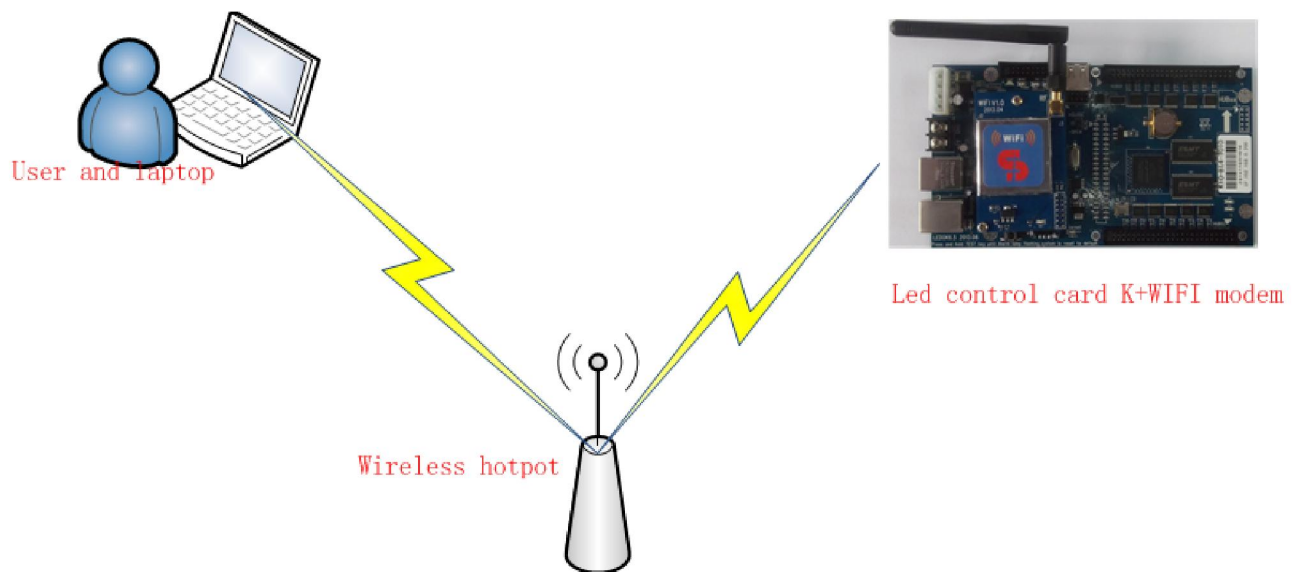
Principle:

There is hotspot nearby led panel, so customer could use laptop to send program to led panel through WIFI, no need to use 3G so that could save data cost.

-----this is WIFI for Wireless Local Area Network.

Diagram connection

1. Wireless Local Network



Preparations

Hardware: Xixun controller K13 with WIFI modem, laptop, RJ45 cable, wireless router or Wireless hotspot

Software: LededitorV10, Ledset2.0 software

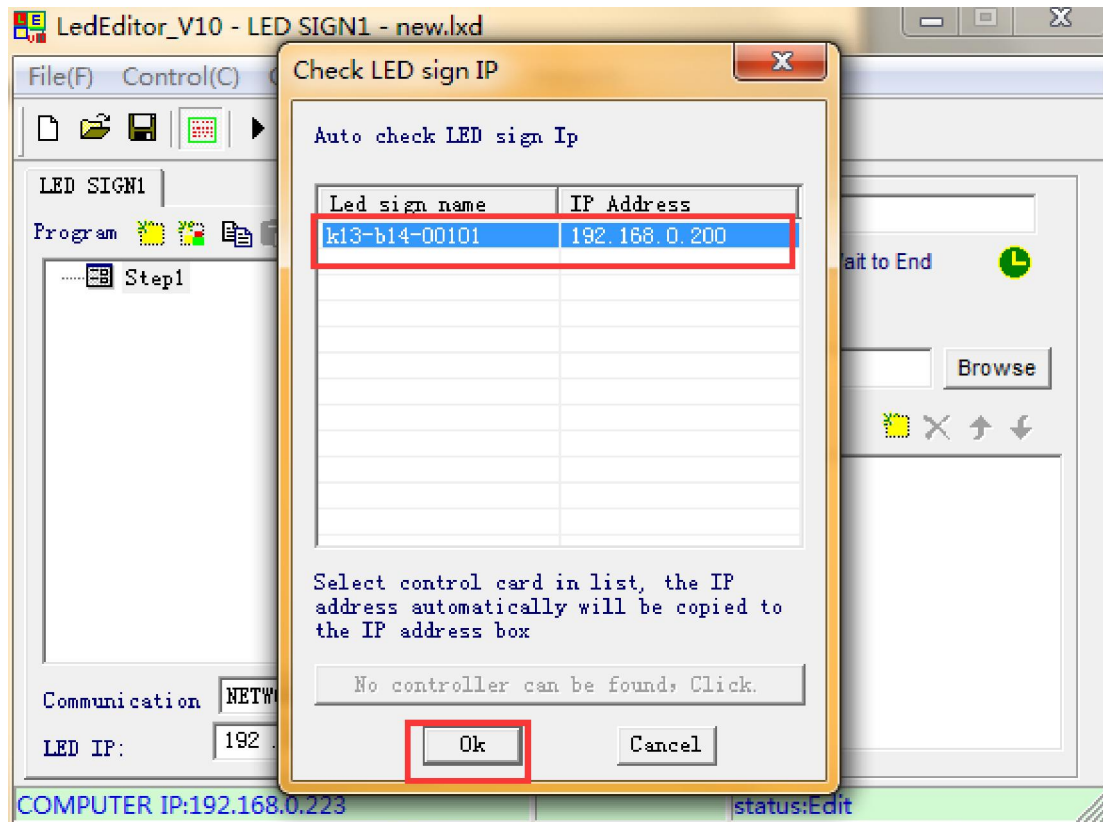


Steps of settings:

For example: Led control card ex-factory IP address is 192.168.0.200

Wireless hotspot's Default Gateway: 192.168.1.1

Step1, running LededitorV9 software, detect led sign IP address and then enter Hardware setup, set WIFI information and send, will see tip message come out and saying "Set WIFI param success"





Hardware setup

SCREEN ID: k13-b14-00101

☐ Automatically obtain an IP address

☒ Use the following IP address

IP address: 192.168.0.200 Send

Subnet mask: 255.255.255.0

Default: 192.168.0.1

☐ Serial port parameter

Serial: COM_RS232 Send

Baudrate: 57600

WiFi

☐ Link Server

☒ Server Domain: www.ledm2m.net Domain backup: Send

☐ Server IP: Custom Name: k13-b14-00101 Send

Service port: 50001 status: no

☐ Data center

Master: test Send

3G status

☒ ID config (485 serial or RF) 1 (1~239) Send FTP Configuration

ID[1-65535]: 1

☐ Other process

Close

Hardware setup

SCREEN ID: k13-b14-00101

☐ Automatically obtain an IP address

☒ Use the following IP address

IP address: 192.168.0.200 Send

Subnet mask:

Default:

☐ Serial port parameter

Serial: COM_RS232 Send

Baudrate:

WiFi param setting

Wifi name: FAST_FCF642

key type: No password

key:

Show password

Send

☐ Link Server

☒ Server Domain: Server IP: Service port: Send

☐ Data center

Master: test Send

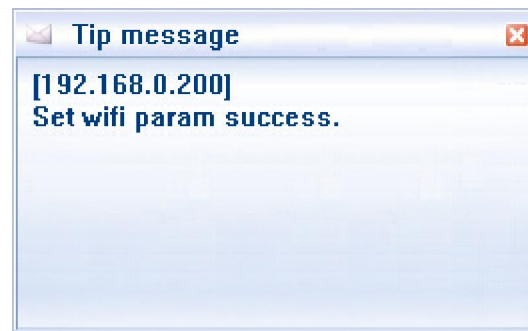
3G status

☒ ID config (485 serial or RF) 1 (1~239) Send FTP Configuration

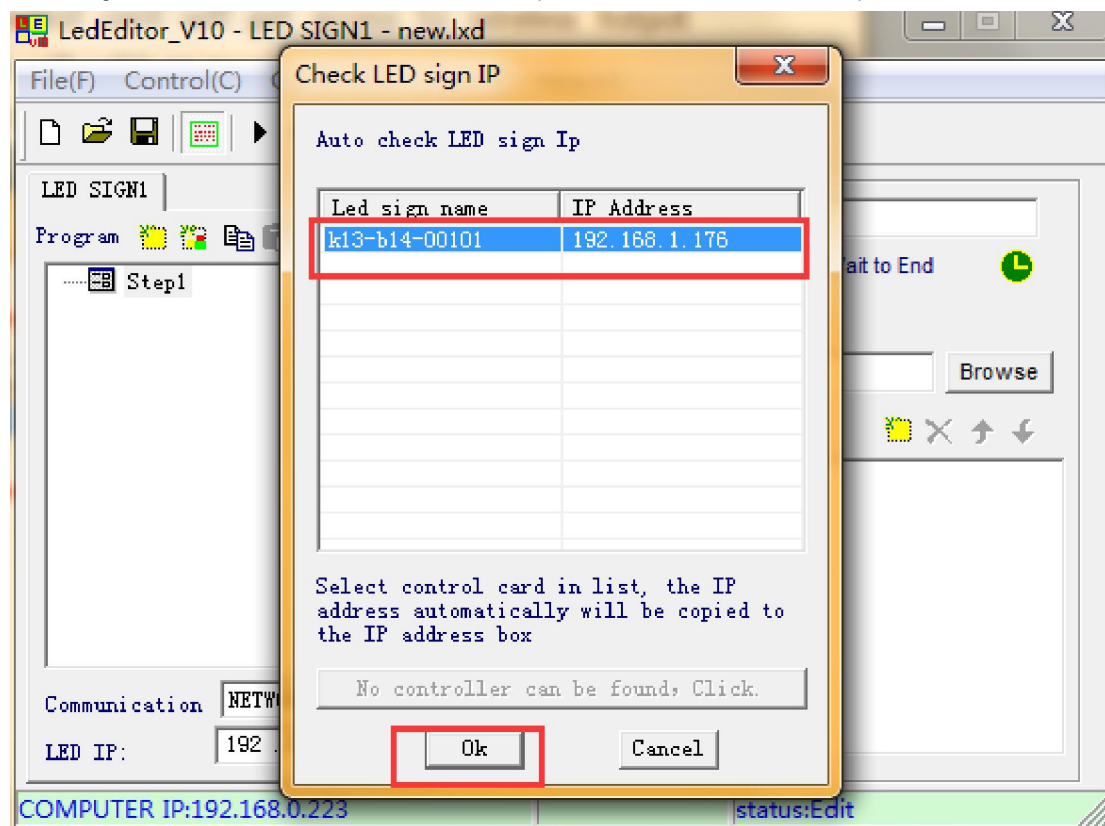
ID[1-65535]: 1

☐ Other process

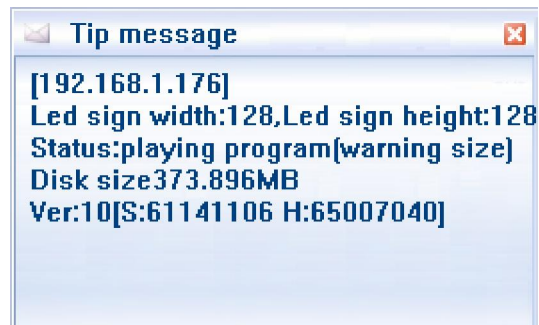
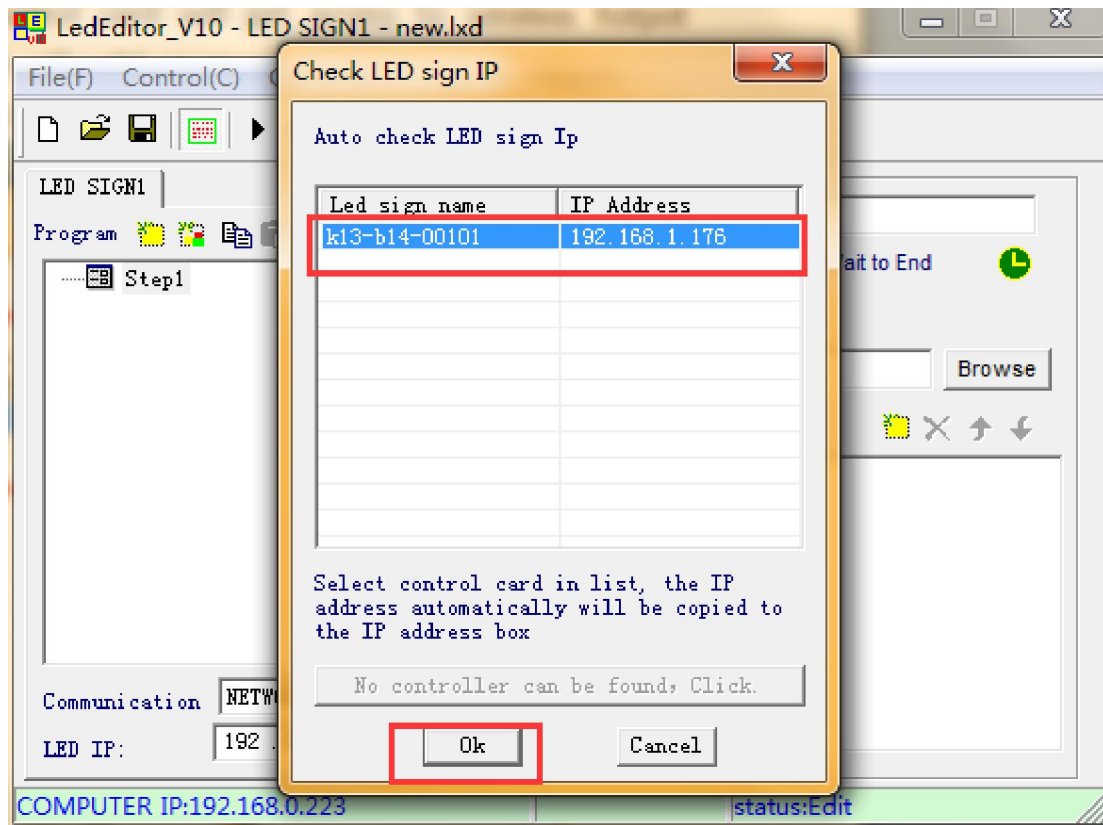
Close

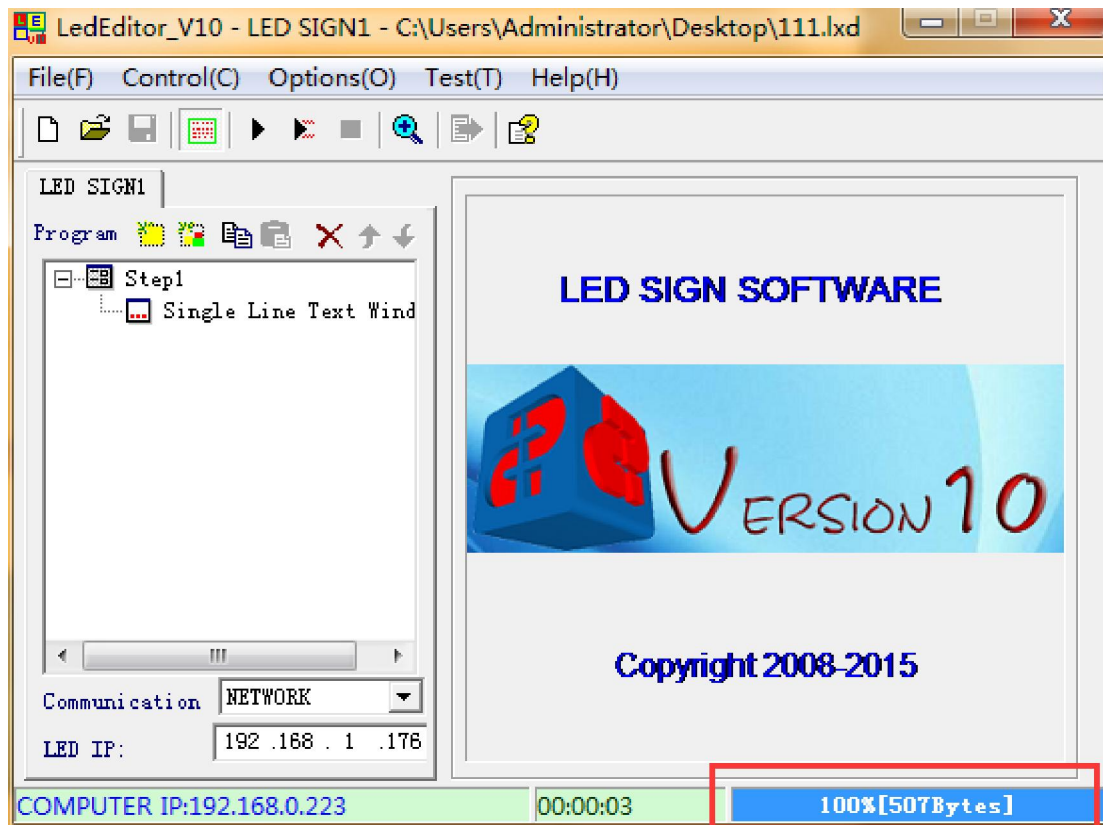


Step2, Then disconnect the RJ45 cable connection. Led control card will get access to wireless hotspot automatically. See Internet light on WIFI modem, Internet light will solid on means WIFI is ok. At this time, led control card has got a new IP address from wireless hotspot. 192.168.1.176 for example:



Step4, laptop gets access to wireless hotspot also and then running LededitorV10 again, then detect led sign IP address via WIFI and send program via WIFI.





Attention: If led control card IP address and wireless hotspot default gateway in the same network segment, then need to change led control card IP into other network segment, different from wireless hotspot default gateway after sending WIFI information.

For example: led control card IP address: 192.168.0.200

Wireless hotspot default gateway: 192.168.0.1

Then firstly, need to run LededitorV9 and enter Hardware setup, send WIFI information success.

After that, back to Ledset2.0 software and enter "Network IP parameter settings" and change led control card IP address into 192.168.2.200 for example.

Then disconnect the RJ45 connection, the led control card will get access to WIFI.